

A photograph of a community garden in Passaic, NJ. The garden is filled with various green plants and bushes. In the background, a man and a woman are working in the garden. The man is wearing a dark jacket and the woman is wearing a blue jacket. They are both looking down at the plants. The garden is surrounded by a dense forest of tall trees. A curved concrete path is visible on the left side of the garden.

Starting a
community garden
in Passaic, NJ

**Presenter:
Patsy Herrera**

Why start a community garden?

There are benefits to a Community Garden:

- In Passaic County, New Jersey almost 50,000 people – 1 in 6 children – struggle with food insecurity.
- Poor nutrition can lead to lasting deficits in cognitive, social, and emotional development. Studies show that food insecure children are twice as likely to develop health problems overall
- Neighborhoods with many poor or low-income residents often have fewer resources that promote health (e.g., full-service grocery stores offering affordable and nutritious foods, parks and recreational facilities that encourage physical activity)
- Make the space feel like it is their own and part of the community.

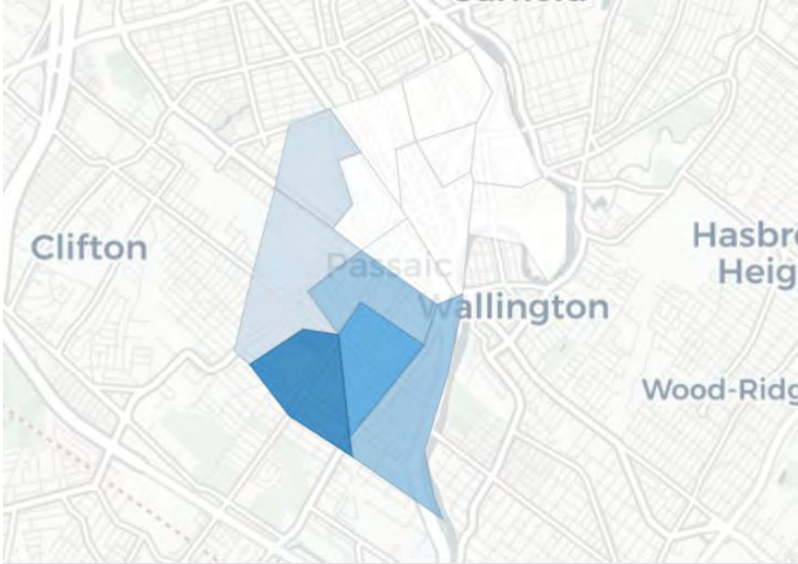
Passaic, NJ

Stats:

- **Poverty Rate: 33.1%**
- **Population :71,057**
- **Median Age: 29.8**
- **Median Household Income \$34,920**
- **Median Property Value :\$309,700**
- **Borders Clifton, Garfield, Wallington, and Rutherford**



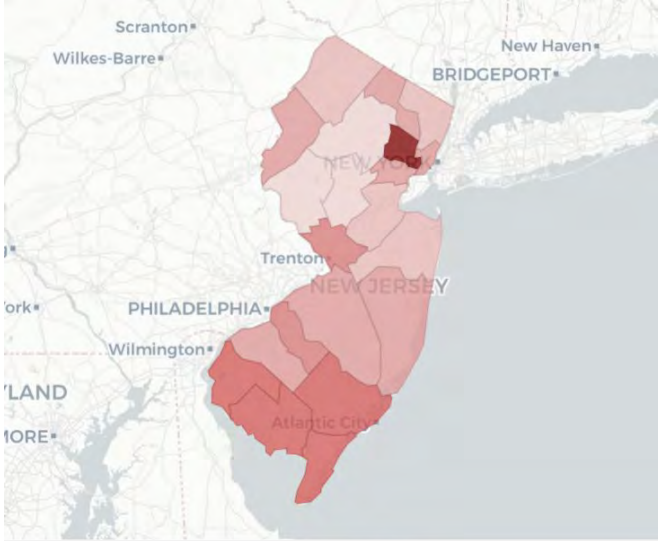
Data



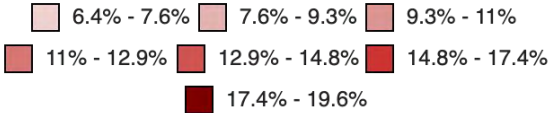
Median Household Income



2013 2014 2015 2016 2017

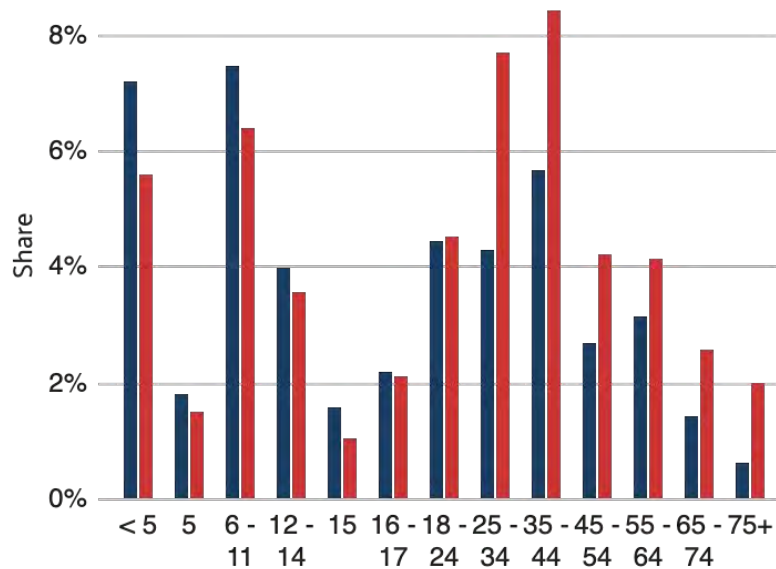




Food Insecurity



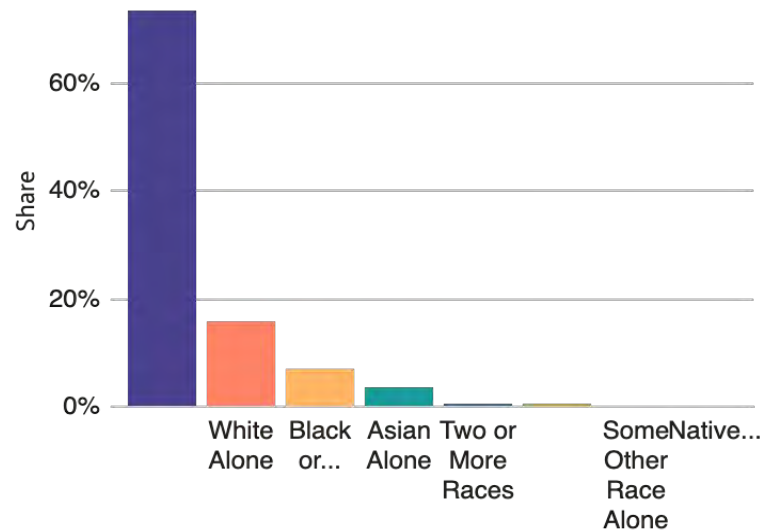
2014 2015 2016 2017 2018

Data cont.



 Female
  Male

2013 2014 2015 2016 2017



Race or Ethnicity



2013 2014 2015 2016 2017

Where

We were considering

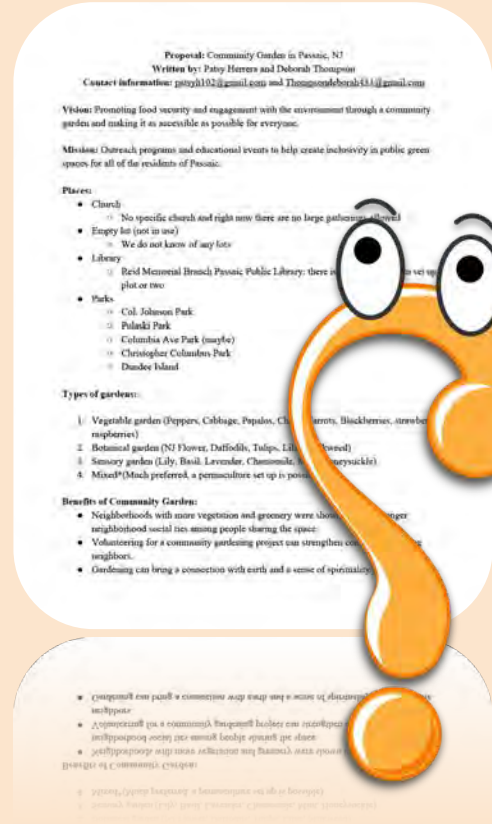
- Park
- Library
- Church
- Empty lots

We wanted a place that was closest to people, where having a car would not be necessary because parking can be a huge hassle, along with other things.



Figuring it out...

- Not something I could have started on my own
 - Went out with my dad and talked about the parks and history
- Had help from friends, family, professors
 - Spoke with people in PSEG ISS and MSUCCG
- Decided to start with communicating with the people in city hall
- Sent email, and thinking about other logistics



Concerns

- Insurance
- Limiting spending for resources
- Need more volunteers/people
- To rent or have used for the public

Where do we go from here?

- Some weird timing, given the current situation, we took a step back
- Taking this time to make sure that we can figure out the logistics and find more people to get involved
- Understand that this may not be possible right now, but are hopeful to have it ready by next year

Feedback or Questions



Sources

- <https://datausa.io/profile/geo/passaic-nj>
- <https://www.cumac.org/hunger-in-nj>
- <http://www.frac.org/wp-content/uploads/hunger-health-impact-poverty-food-insecurity-health-well-being.pdf>

Thank you!

